

A young child is the central focus, holding a glowing light stick high in the air. The child is smiling broadly, and their face is illuminated by the light from the stick. The background is a dark night scene filled with out-of-focus lights in various colors, including blue, green, and yellow, suggesting a festival or fair. The overall mood is joyful and celebratory.

# Uniflood

*Best in class Flood light*

**Ajay K R**

Lighting – PLS - Outdoor

April 2014

**PHILIPS**

# Introducing.....



Philips **Uniflood** is integral flood light with driver inside a PDC housing,  
Which is **Highly efficient, Reliable and sturdy** compared to similar  
LED, Halogen, Metal Halide and and CFL Flood lights

# Applications

## Periphery / Security Lighting for

- ✓ Residential Apartments
- ✓ Gated communities
- ✓ Industries
- ✓ Office campus

## Parking area lighting

## Park / Gardens lighting

## Billboard lighting

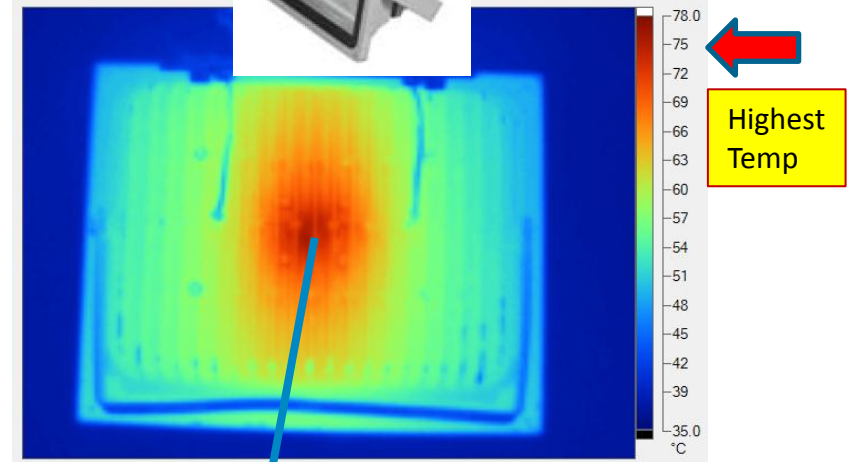


# Feature and Benefit

Uniflood



Market product



Hotter housing and concentrated heat leads to lesser life of LED product and higher depreciation of light

# Feature and Benefit

Uniflood



- ✓ Use of most advanced and high efficient LED's
- ✓ Well designed optics ensure light at right place, Hence higher lighting level



→ No OPTICS USED leads to light pollution

Market product

# Feature and Benefit

Uniflood



Philips **37W** == **80W** Market product

	System Lumen	System Wattage	System Lm/w
Market	2103	51	41.2
Philips	3500	37	94.6

# Feature and Benefit

Uniflood



Philips **37W** == **500W** Halogen product

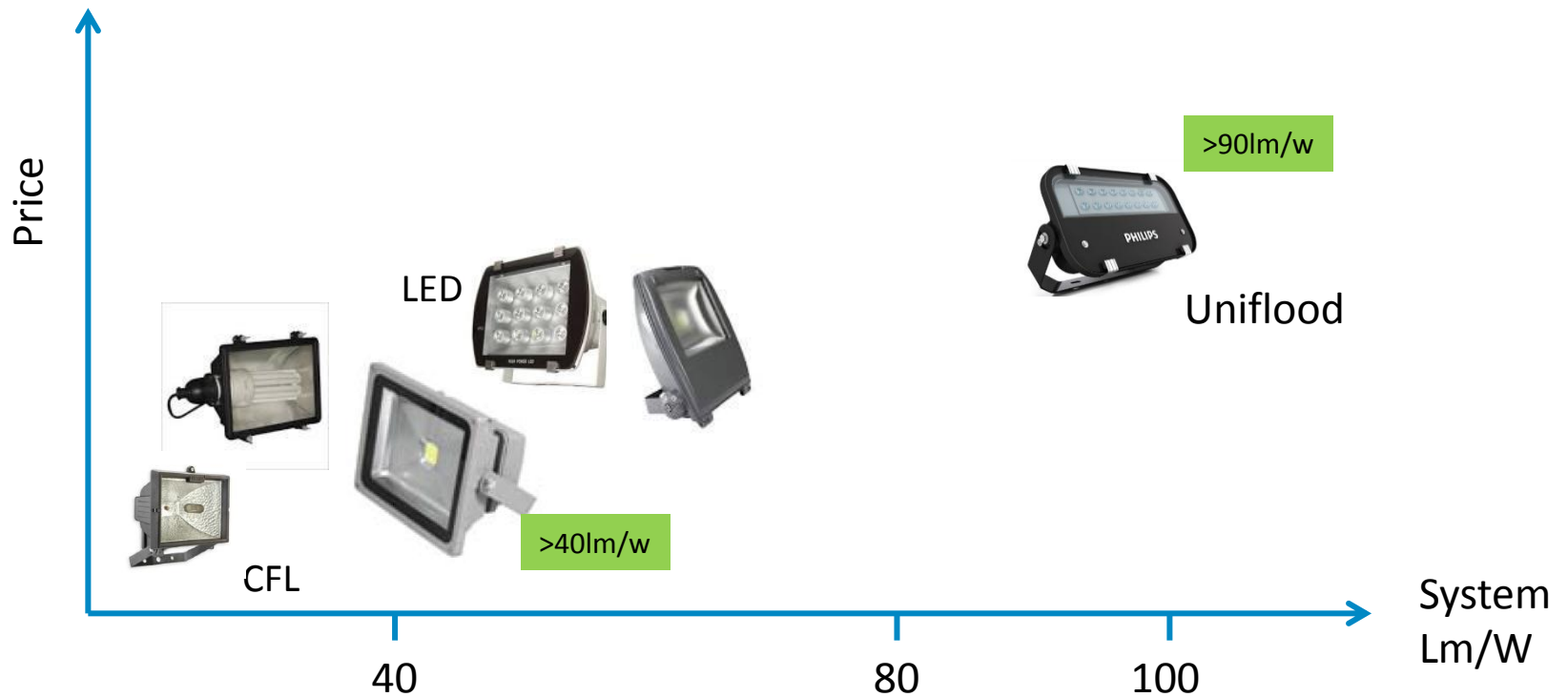
	System wattage	Saving	Payback
Halogen	500W		
Philips	37W	463W	< 2years

Savings per year with 4 hours of operation per day :

Savings per year = (463W x 4hrs x 365 days x Rs.5 per unit )/1000 = Rs.3380

# Product Position

Market available options





# Compliance

✓ IS 10322  
(Part 5/sec 1) -1985

✓ Class I

✓ IP 66

✓ Design Registration Applied



# Summary

## Uniflood



### USP/Differentiator

- *Direct LED Substitute of Halogen lamp and 70W Metal Halide*
- *Lumen / watt – 90 lm / W*
- *Saving of up-to 50%*
- *Maintenance free solution*

### Target Group:

- *M& E Consultants / Builders / Malls / Signage / Contractors*

### Applications:

*Billboard, Façade, Area lighting and other general flood application*

### Specifications

- *LM6 PDC Housing*
- *High efficiency glass cover*
- *Lumen Pack : 3500 lm (sys)*
- *System Power : 37 watt*
- *Driver Efficacy : > 85%*
- *Life L70, 50k Hrs*
- *Color temp : Cool white*
- *IP66*

*All Electrical and photometry specification are nominal values and will have a variation of +/-10%*

# Ordering Information

12 NC	Description
919515810340	BVP120 LED 35 CW FG S1 PSU GR

Family Type	Source	Dimension
BVP120	High power LED's	330 x 210 x 77

# Mounting Instruction:

PHILIPS Lighting  
Installation Instruction

**MEDIUM WATTAGE FLOOD LUMINAIRE**

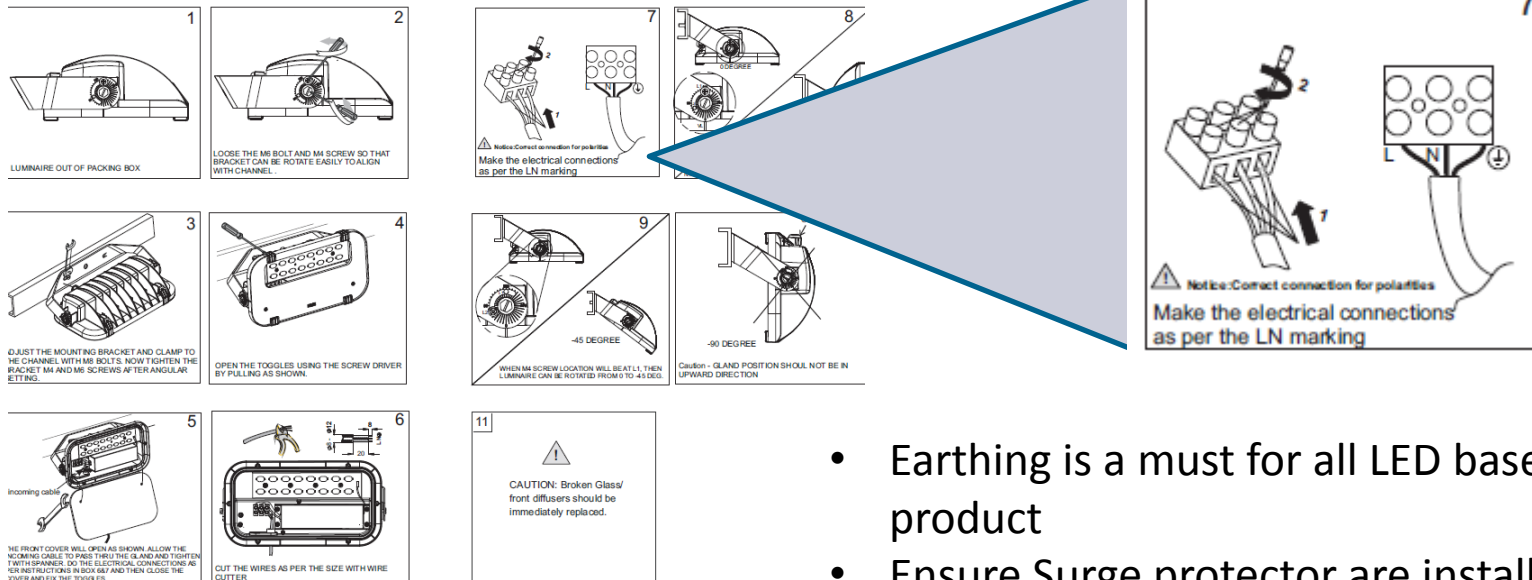
Type Name	: BVP120
Lamp	: LED's
Voltage	: 240V ~ 50Hz
IP Classification	: IP 65
Application	: Outdoor
Projected Area	: 0.065 sq. m
Weight	: 2.3 kg, Approx

CAUTION: ENSURE 3 CORE CABLE FOR CONNECTIONS (WIRE DIA 7-10 MM) MOUNTING TO BE DONE USING BOLT M8  
ALL DIMENSION ARE IN mm

Philips India Limited **PHILIPS**

- LUMINAIRE OUT OF PACKING BOX
- LOOSE THE M8 BOLT AND M4 SCREW SO THAT BRACKET CAN BE ROTATE EASILY TO ALIGN WITH CHANNEL.
- ADJUST THE MOUNTING BRACKET AND CLAMP TO THE CHANNEL WITH M8 BOLTS. NOW TIGHTEN THE BRACKET M4 AND M6 SCREWS AFTER ANGULAR SETTING.
- OPEN THE TOGGLES USING THE SCREW DRIVER BY PULLING AS SHOWN.
- THE FRONT COVER WILL OPEN AS SHOWN. ALLOW THE WIRING CABLE TO PASS THRU THE GLAND AND TIGHTEN WITH SPANNER. DO THE ELECTRICAL CONNECTIONS AS PER INSTRUCTIONS IN BOX KEY AND THEN CLOSE THE COVER AND FIX THE TOGGLES.
- CUT THE WIRES AS PER THE SIZE WITH WIRE CUTTER.
- Make the electrical connections as per the LN marking
- WHEN M4 SCREW LOCATION WILL BE AT L1, THEN LUMINAIRE CAN BE ROTATED FROM 0 TO +90 DEGREE.
- WHEN M4 SCREW LOCATION WILL BE AT L1, THEN LUMINAIRE CAN BE ROTATED FROM 0 TO -45 DEGREE.
- WHEN M4 SCREW LOCATION WILL BE AT L1, THEN LUMINAIRE CAN BE ROTATED FROM 0 TO -90 DEGREE.
- CAUTION: Broken Glass/ front diffusers should be immediately replaced.
- GLAND

# Mounting Instruction: Caution



- Earthing is a must for all LED based product
- Ensure Surge protector are installed in the supply panel
- Ensure LED products are in a separate circuit and not connected with other heavy duty loads
- The warranty will be void if earthing is not provided as per applicable standards

# Point Of Sale Material : (POSM)

- Poster A3 size to be put in all CP's and key outlets
- 2000nos of poster ready
- 500pcs will be available for Aug sale  
(Hurry put in your orders, available on FIFO basis)
- Contact : RMM's in the region for POSM
- Standees artwork is ready to be arranged through RMM's



More **brightness.**  
More **saving.**

World's **No.1** sold  
LED Lighting

**Uniflood**  
Substitute of Halogen and 70W  
MHNTD lighting system

**Longer life**  
Through uniform heat distribution

**Higher lighting levels**  
Use of advanced optics

**Saves energy**  
Consumes only **37W**  
Equivalent to 80W of ordinary led flood light

**save** Energy Savings Up to 50%

90 lm/W

Zero maintenance

IP66 Protection against dust and water

For more information contact us at  
lighting.india@philips.com or 1800 102 2929  
www.lighting.philips.co.in

**LED**

**PHILIPS**  
**PHILIPS**



Thank You